

Appendix 4**Table of Contents**

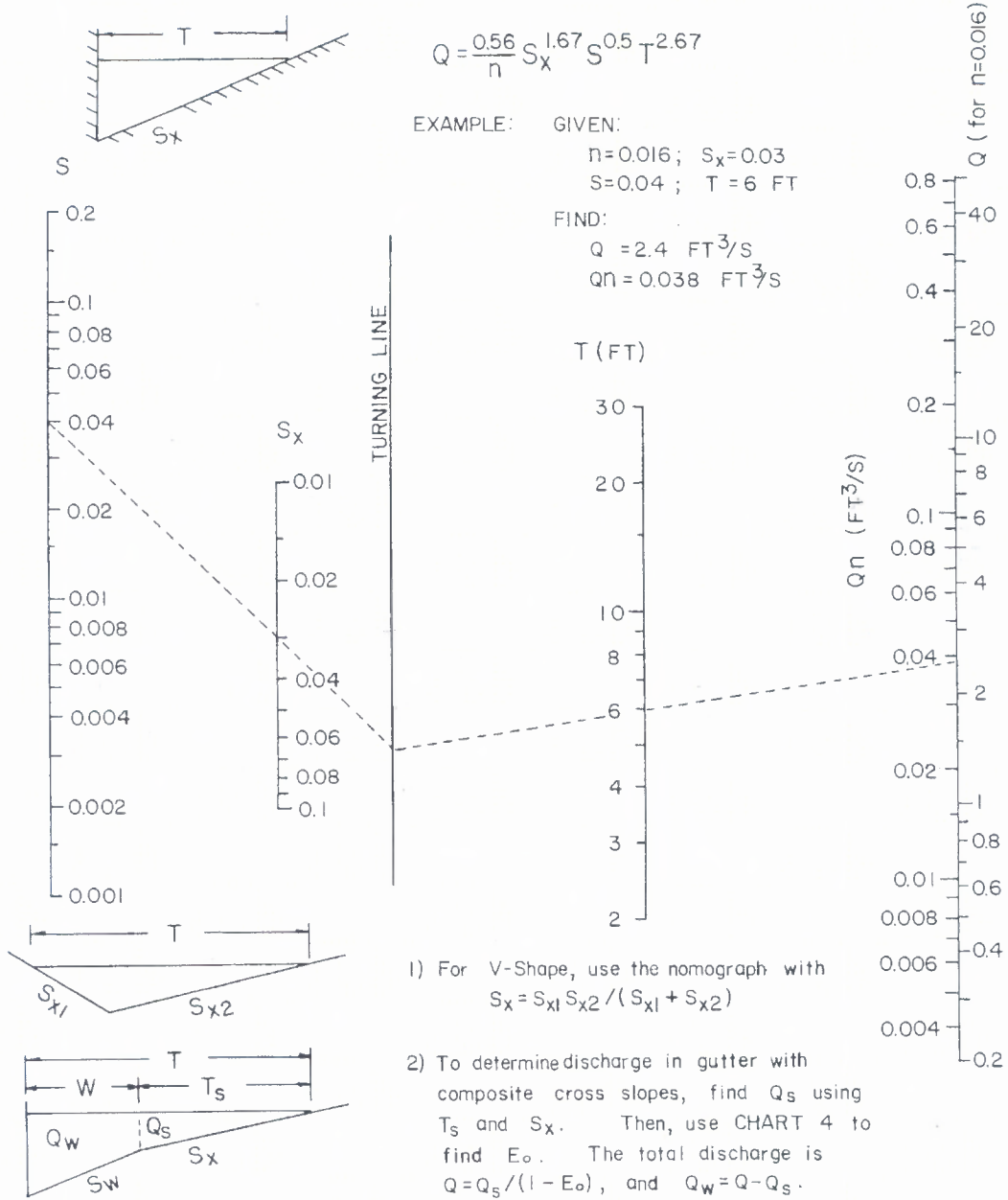
Chart Number	Title
1	Flow in Triangular Gutter Sections
2	Ratio of Frontal Flow to Total Gutter Flow
3	Conveyance in Circular Channels
4	Velocity in Triangular Gutter Sections
5	Grate Inlet Frontal Flow Interception Efficiency
6	Grate Inlet Side Flow Intercept Efficiency
7	Curb-opening & Slotted Drain Inlet Length for Total Interception
8	Curb-opening and Slotted Drain Inlet Interception Efficiency
9	Grate Inlet Capacity in Sump Conditions
10	Depressed Curb-opening Inlet Capacity in Sump Locations
11	Undepressed Curb-opening Inlet Capacity in Sump Locations
12	Curb-opening Inlet Orifice Capacity for Inclined and Vertical Orifice Throats

CHART 1B

$$Q = \frac{0.56}{n} S_x^{1.67} S^{0.5} T^{2.67}$$

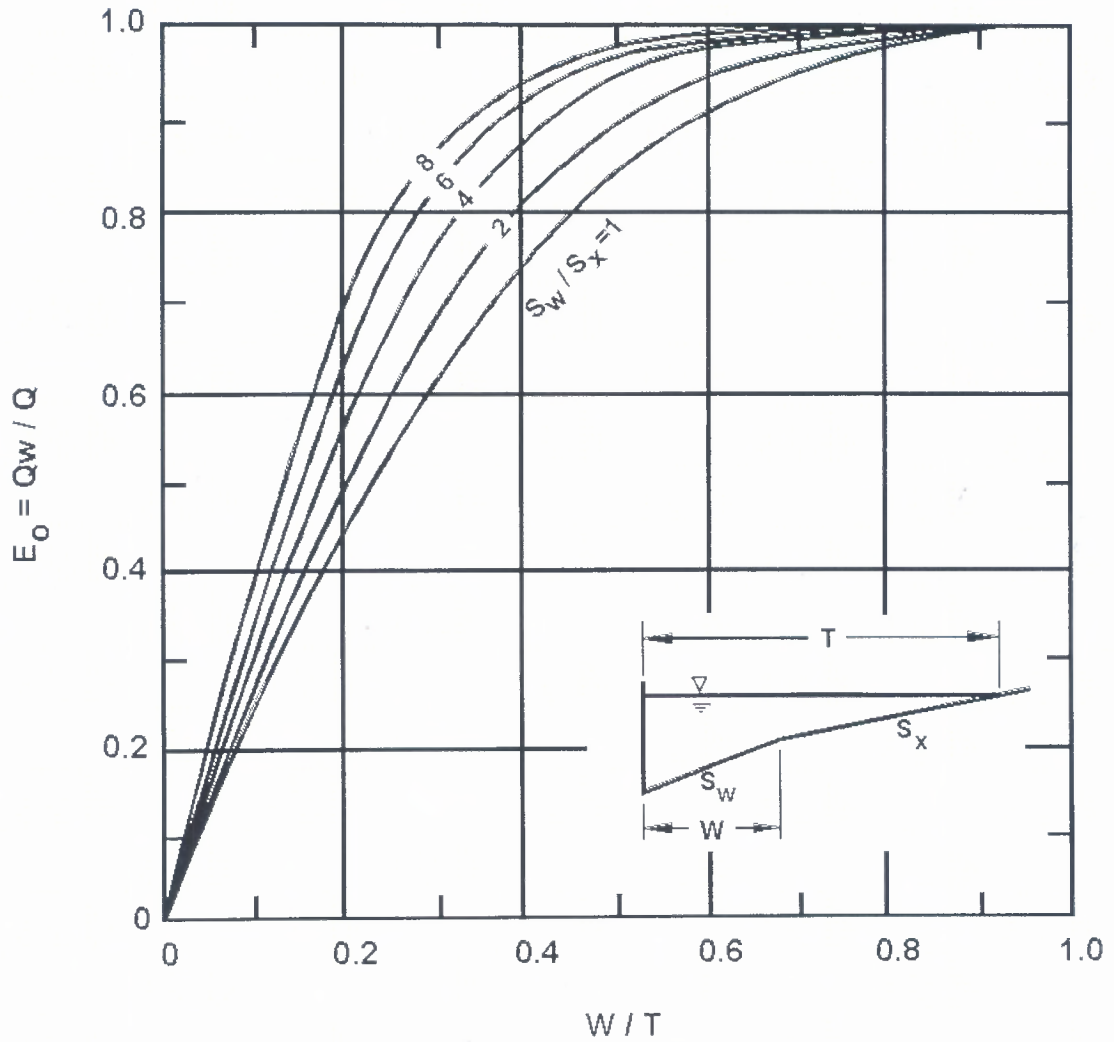
EXAMPLE: GIVEN:
 $n=0.016$; $S_x=0.03$
 $S=0.04$; $T=6$ FT

FIND:
 $Q = 2.4$ FT³/S
 $Qn = 0.038$ FT³/S



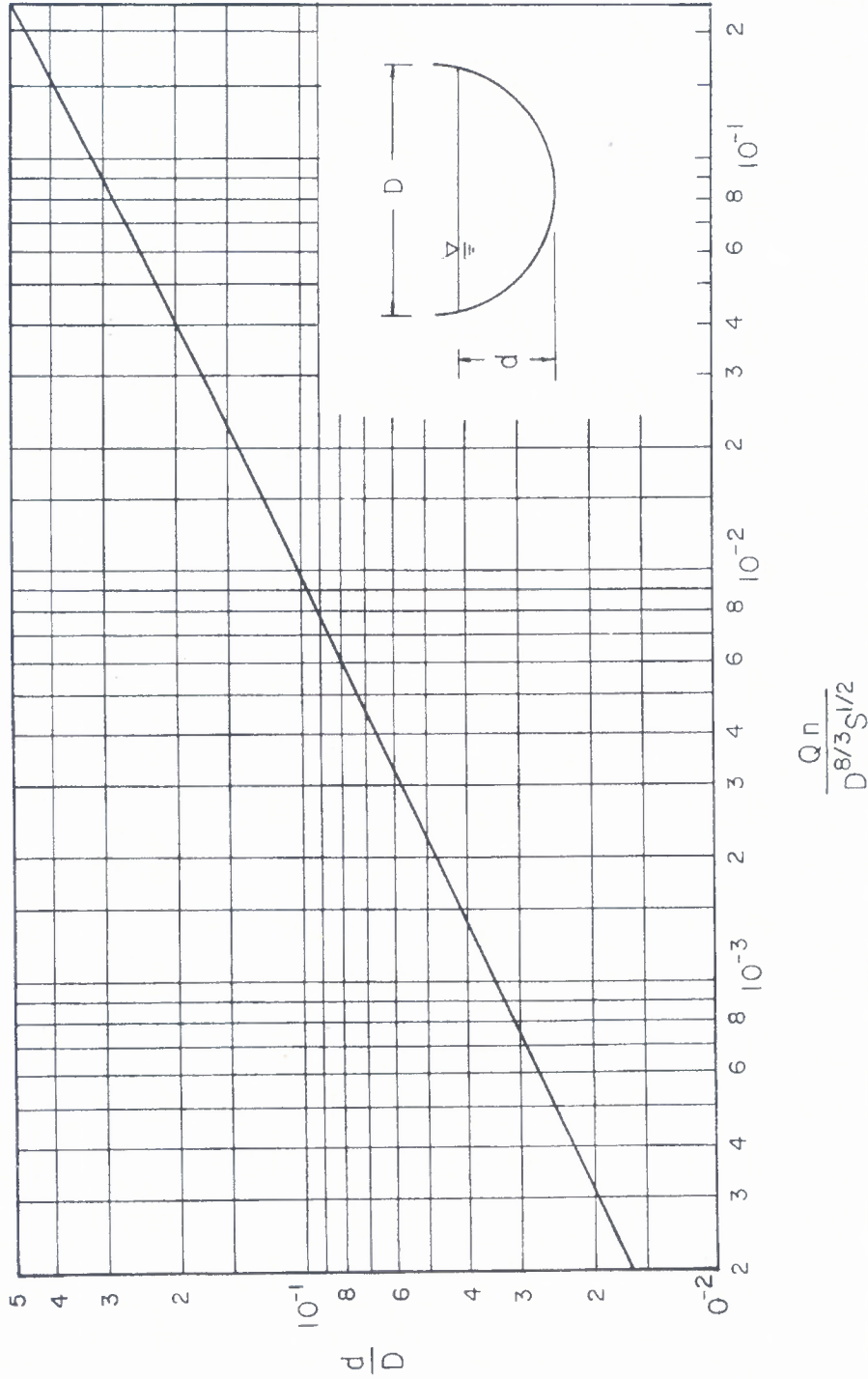
Flow in Triangular Gutter Sections - English Units

CHART 2B



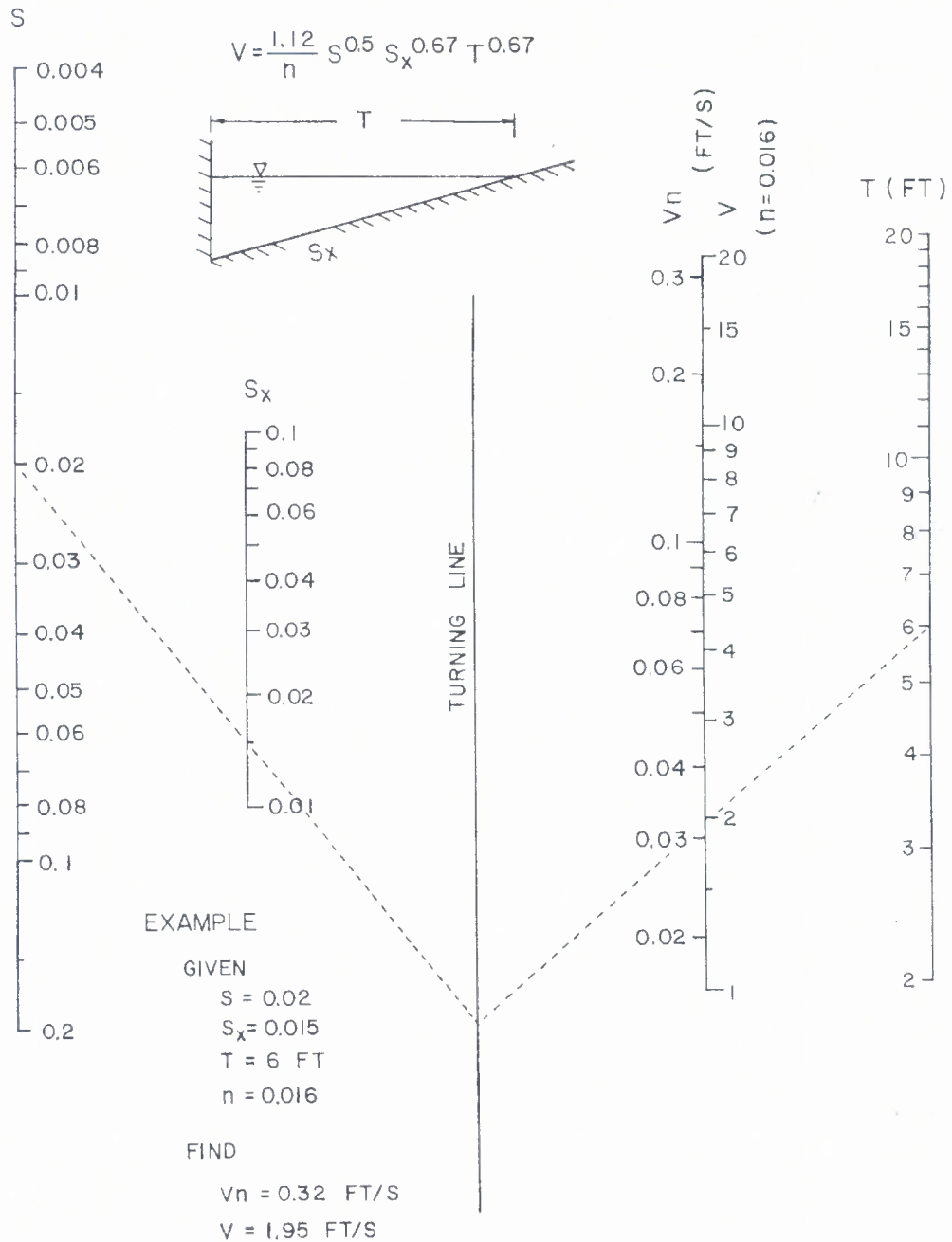
Ratio of Frontal Flow to Total Gutter Flow

CHART 3B



Conveyance in Circular Channels - English Units

CHART 4B



Velocity in Triangular Gutter Sections - English Units

CHART 5B

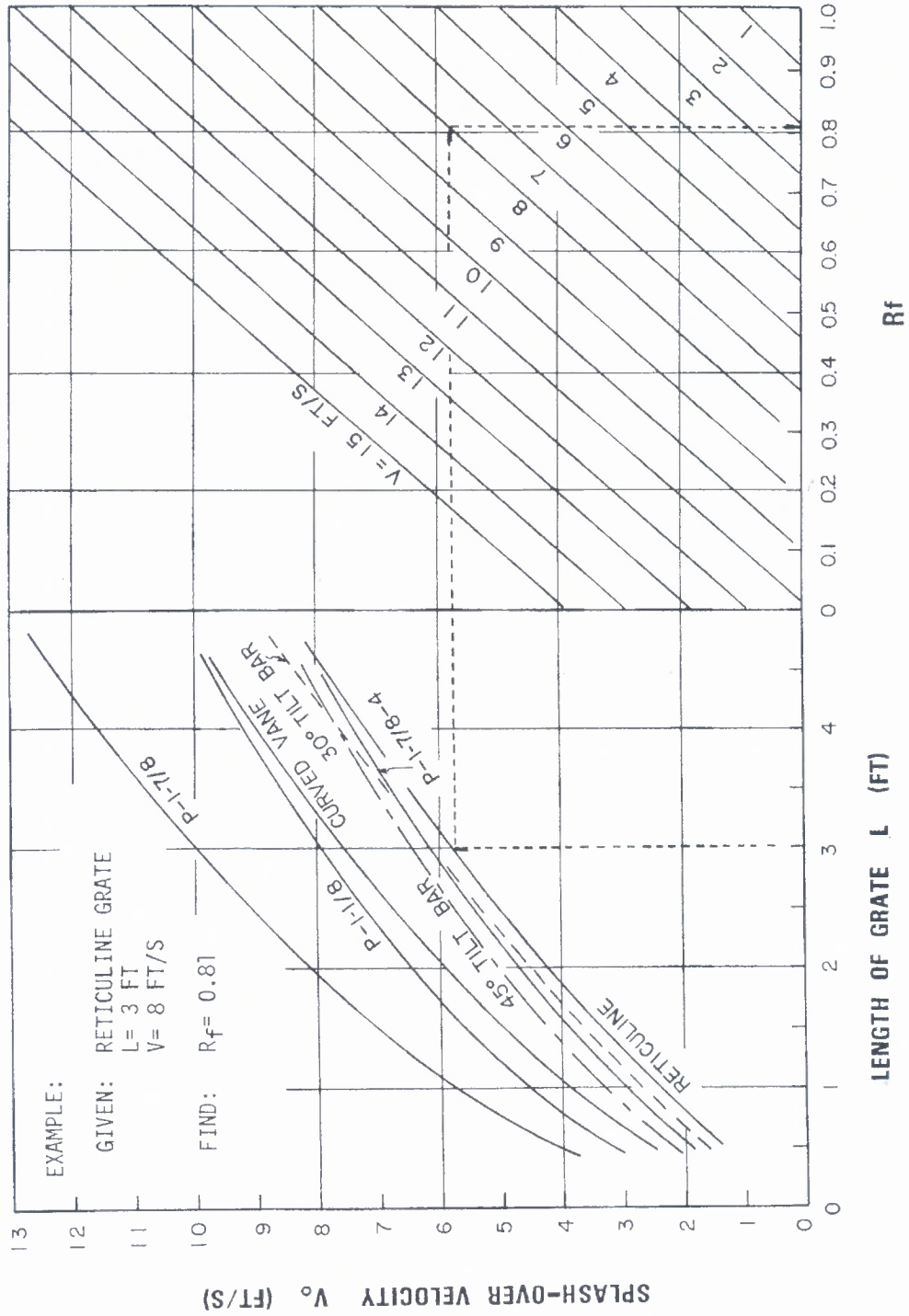
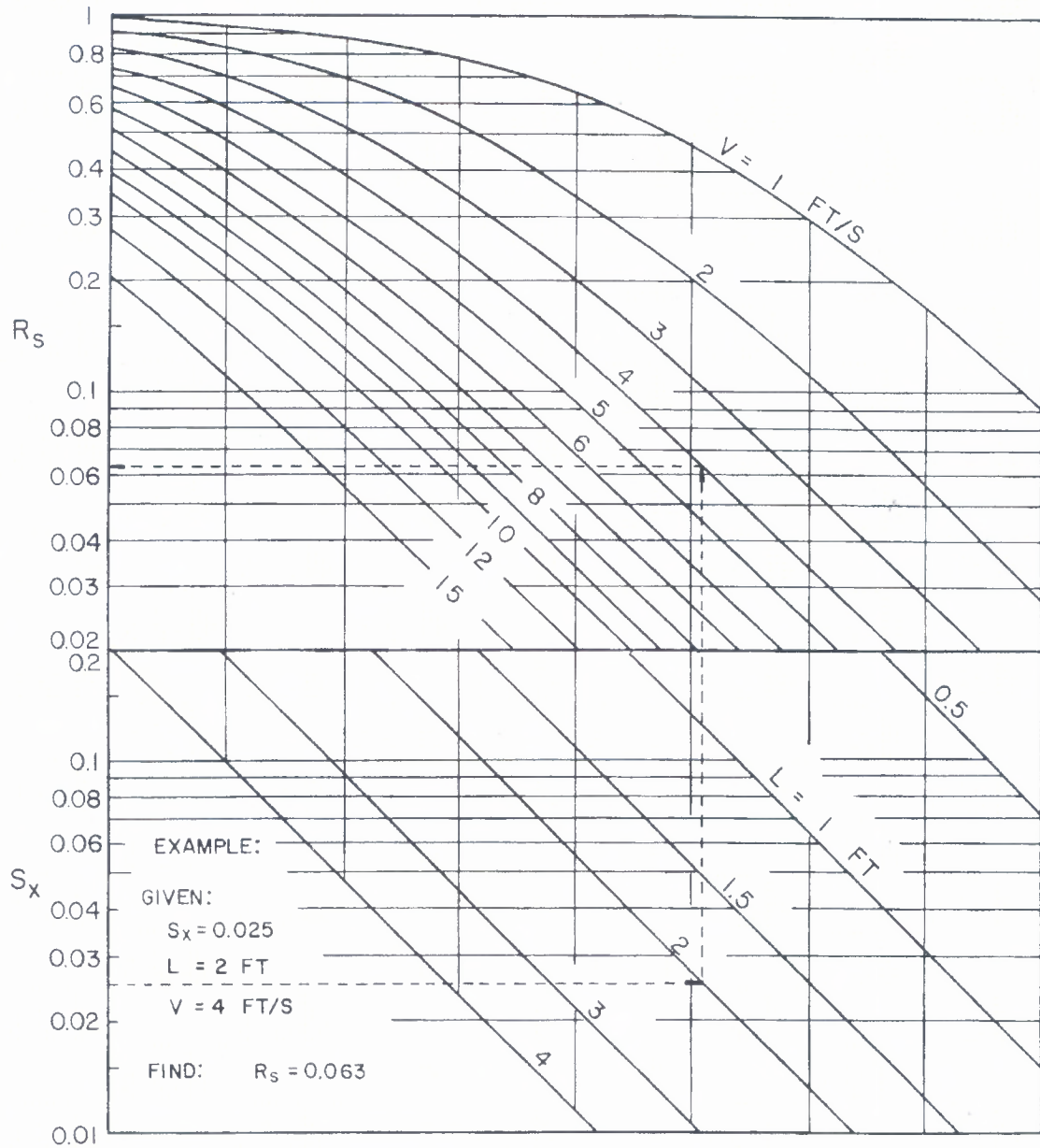
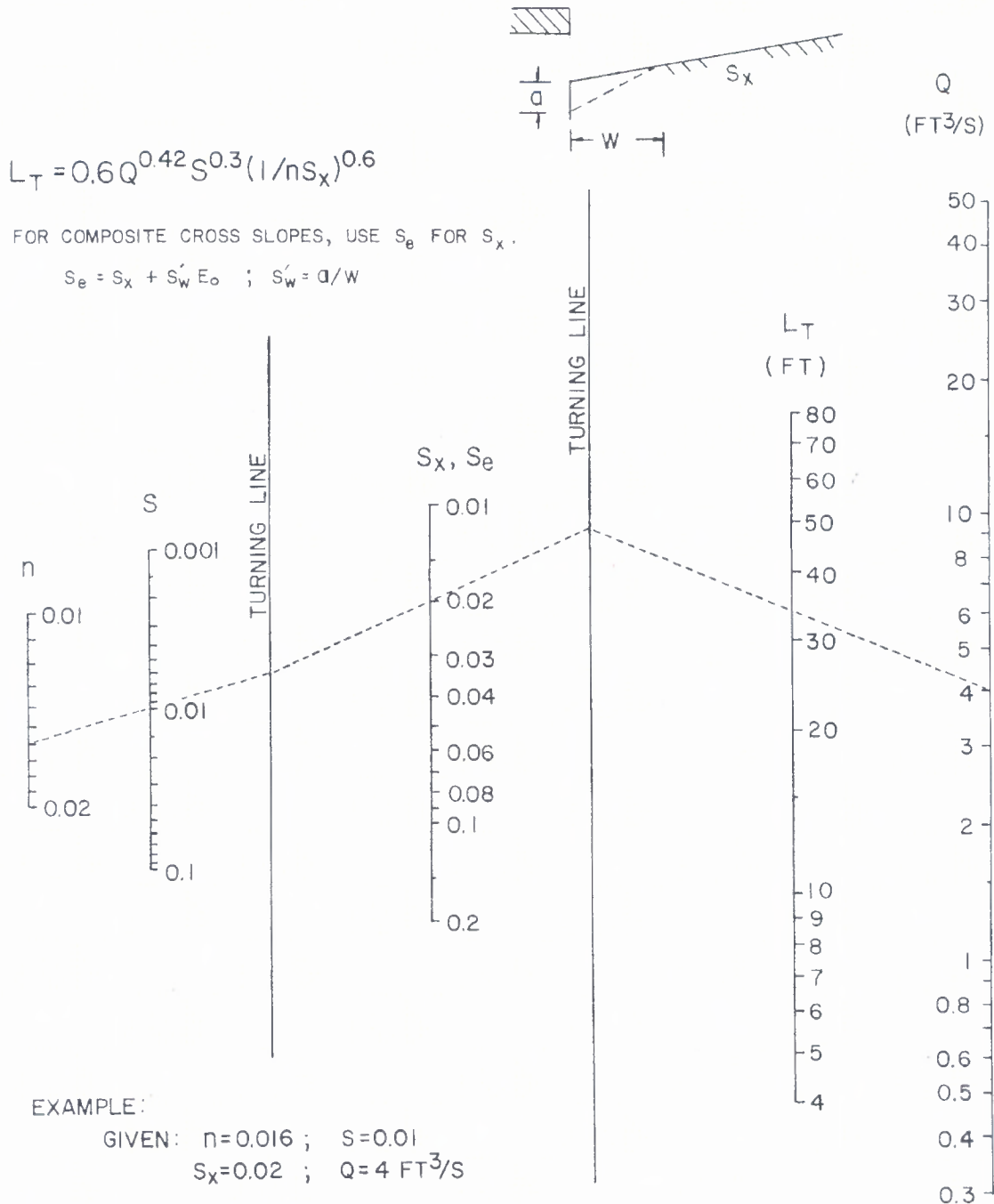


CHART 6B



Grate Inlet Side Flow Intercept Efficiency

CHART 7B

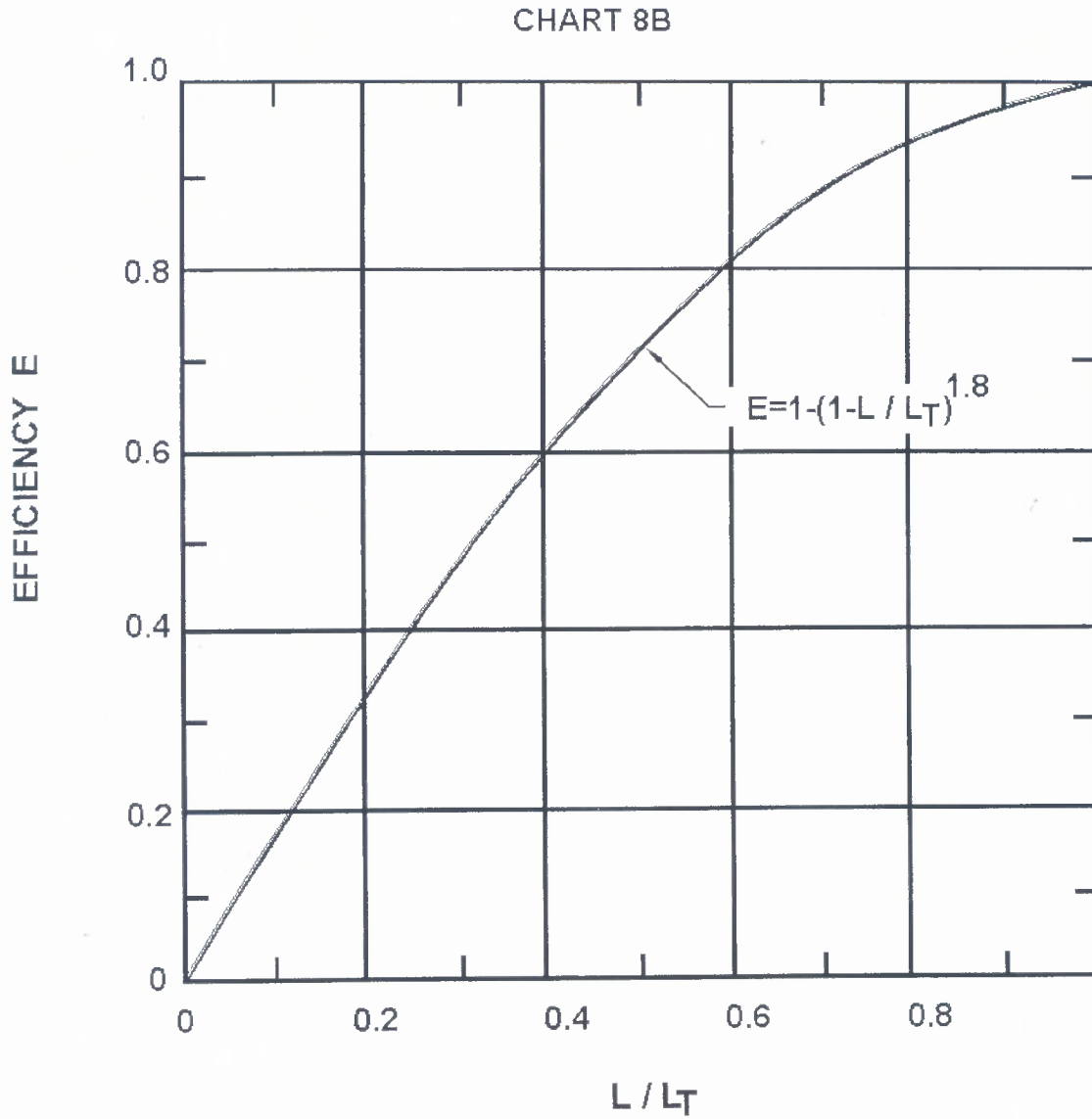


EXAMPLE:

GIVEN: $n=0.016$; $S=0.01$
 $S_x=0.02$; $Q=4$ FT³/S

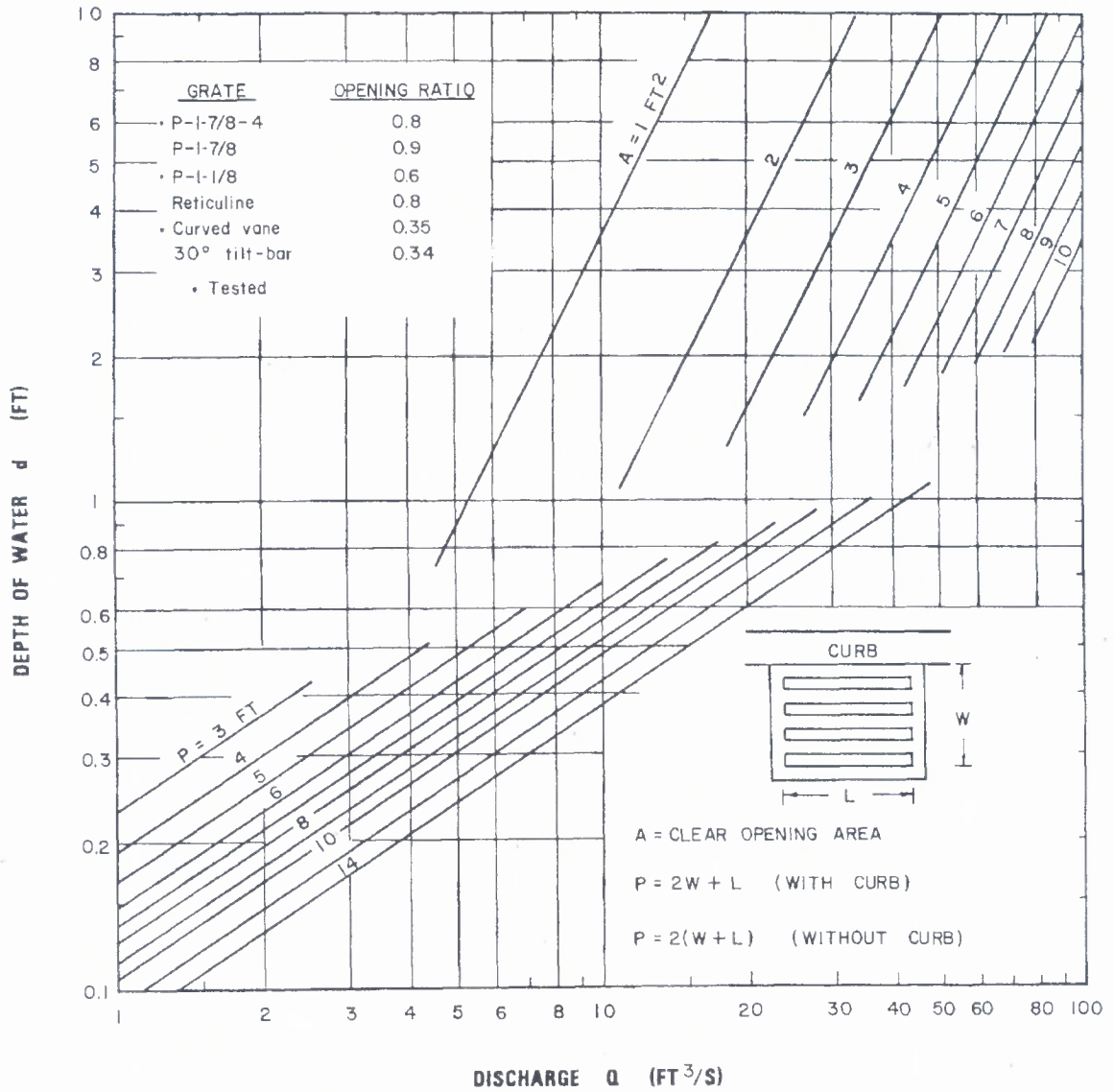
FIND: $L_T = 34$ FT

Curb-opening & Slotted Drain Inlet Length for Total Interception - English Units



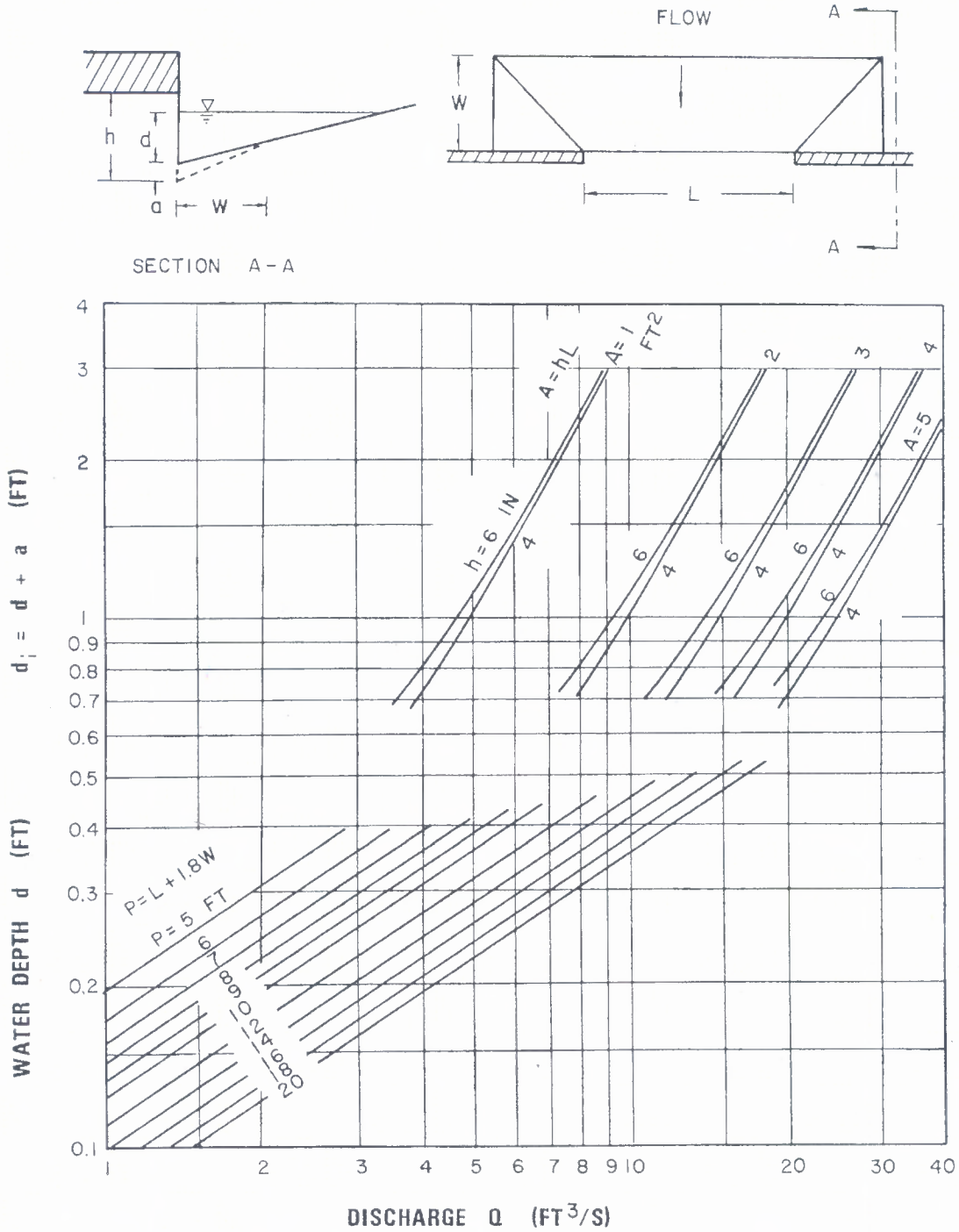
Curb-opening and Slotted Drain Inlet Interception Efficiency.

CHART 9B



Grate Inlet Capacity in Sump Conditions - English Units

CHART 10B



Depressed Curb-opening Inlet Capacity in Sump Locations - English Units